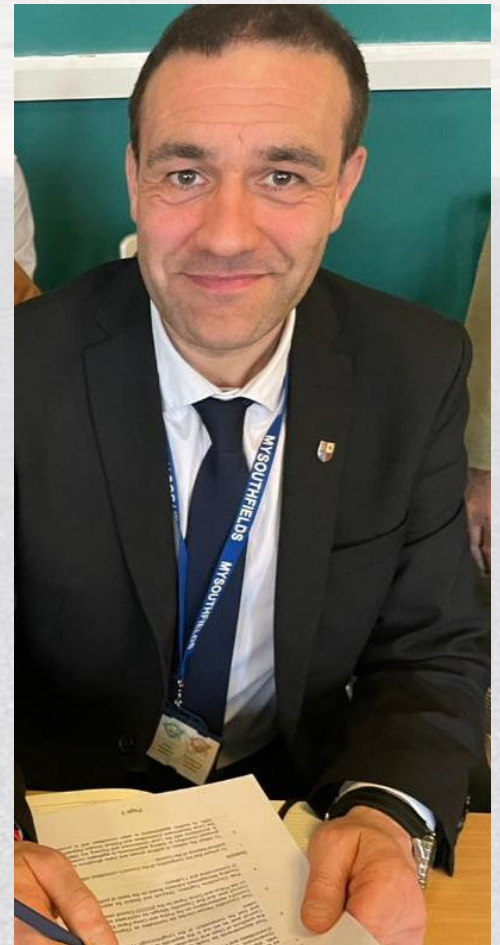


# The Annual Report of Councillor Ted Parton

2022-2023

## MyLoughboroughSouth



## You\_Matter...2023

All work that takes place, representing both the residents of the Loughborough South Electoral Division and the wider Leicestershire public, is driven by a need to deliver high quality local services for all.

Leicestershire County Council has a huge role to play in your life and representing the public at this organisation is a serious daily task.

You are welcome to take a look, from year two of the 2021-2025 electoral cycle, at issues, news and achievements in both the Loughborough South Division and wider afield in the county.

## ADULTS AND COMMUNITIES - CABINET SUPPORT ROLE



In May 2022, it was a huge honour to be asked to continue in the cabinet support member to Mrs Christine Radford, in the Adults and Communities Department.

Leicestershire County Council's (LCC's) Adults and Communities Department delivers library, heritage, adult learning and adult social care services to people living in Leicestershire. We aim to provide and commission high quality services which enrich the lives of individual people, families and their communities. The department has the largest budget in the council and covers a wide spectrum of care and community services.

Mrs Radford has decided to continue with delegation of sections of the portfolio as part of a job share. My role is therefore to politically lead the adult learning and mental health sides of the department.

The role involves a fortnightly lead member briefing with the directors and senior managers in the A&C Department. In addition, we visit as many facilities as possible across the county. The variety of venues is staggering: from May 2022 - April 2023 we attended: The Harbrough Museum and Library, where we viewed an exhibition of artwork entirely created by inmates of Gartree prison (we visited the prison in 2021)



SpeThe East Midlands Care Awards evening at the University of Nottingham Conference Centre





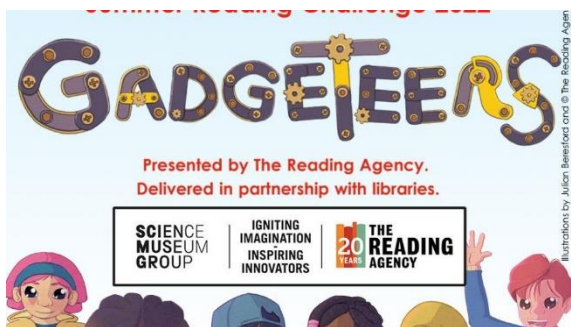
Speaking at and presenting awards to the adult learning service annual gathering (at County Hall)



The Carer's Forum, where unpaid family and friends gathered to learn how to protect their own health and wellbeing.



The Ladybird Exhibition at Loughborough Library, celebrating the town's famous publisher.



The Leicestershire summer reading challenge -held at the Space Centre, Leicester.

## SCHOOL TRAFFIC ISSUES

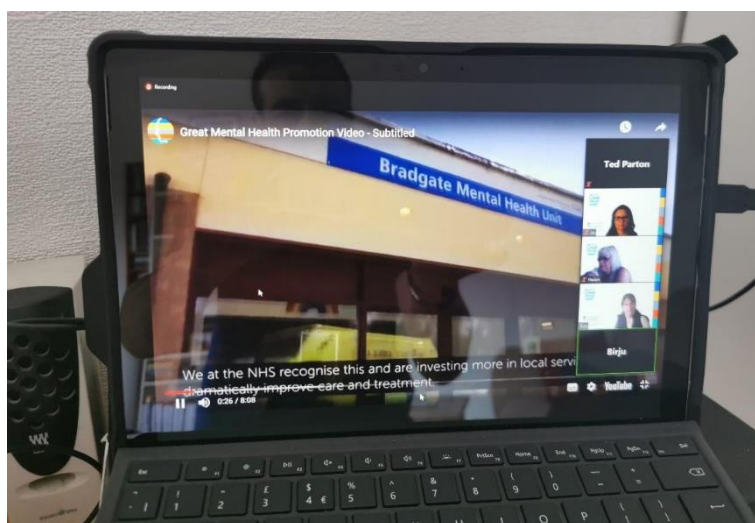
The problem of pupils being dropped off and picked up on residential streets continues to be a major disturbance to residents in the areas surrounding: The School's Foundation, William Street CofE primary and the Beacon Academy.



Dialogue with Leicestershire police, Charnwood Borough Council and the schools continues, as we seek to thwart this vast over-reliance on cars to transport children to school.

## NHS MENTAL HEALTH RECONFIGURATION

In 2021 the NHS, through their operating arm, the Leicestershire Partnership Trust, launched a major consultation on how to deliver mental health services through the county. In 2022, the roll-out of mental health drop-in centres began (named 'Crisis Cafes'). It was an interesting experience working with three different mental health charities, as they sought to both bid for and open such centres in the city and county.



### Service description

The Neighbourhood Mental Health Cafés are part of Leicestershire Partnership NHS Trust's local support for people who need immediate help with their mental health. The cafes are drop in centres for anyone to come and talk to us about their mental health – no appointment needed. We have supportive, trained staff who can listen and provide the practical support you need. There will eventually be 25 cafes

serving local communities across Leicester, Leicestershire and Rutland.

## LOUGHBOROUGH TOWN TEAM /BEDFORD SQUARE GATEWAY DEVELOPMENT

The £3.8 million redevelopment scheme was finally completed in July 2022.

After working with many officers and councillors across the county council, we ensured that the lead project body -Charnwood Borough Council -rectified the list of highway snags that would render the site unworthy of a safety certificate, in order that it then be adopted by the highways authority (LCC).



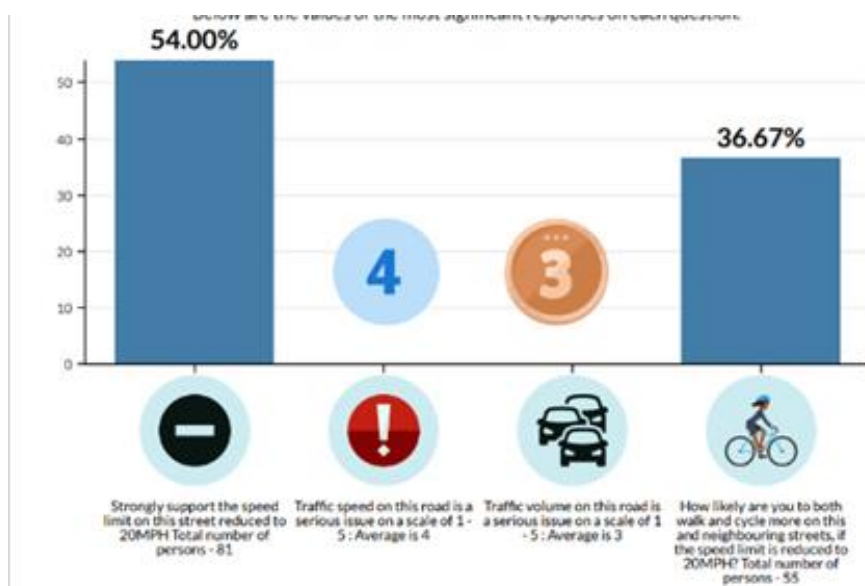


In a previous report it was highlighted one's involvement in the task and finish design group for the Bedford Square Gateway Project.

A serious matter that emerged in the spring of 2022 was that, due to there being no colour delineation of flag stones, kerbstones and parking bays, many people were falling and seriously injuring themselves. I urgently held high-level meetings with all parties and have been persistently making the case, including in the media, that the design must be varied, with the insertion of differently coloured kerbstones. We had ensured that a temporary solution was enacted, with a white line being placed inside the parking bays.

## 20 MPH CAMPAIGN

In November 2022, as a result of a continued interest in road safety and reducing carbon emissions, a 20-mph campaign was launched. The specific streets earmarked for a 10-mph reduction are: Frederick Street, Beacon and Park Roads.



A professional was recruited (as a volunteer) to assist in the design of a comprehensive questionnaire, which was hand delivered to nearly all streets in the Southfields section of the division.

There were 150 responses and 54% were strongly in favour of the speed reductions. Nearly 37% of respondents stated that they would both walk and cycle more.



Frederick Street



Beacon Road



Park Road (Beacon Road to Shelthorpe Road)



Park Road (Ling Road to Hazel Road)

## Anti-Social Behaviour



The issue of crime and anti-social behaviour affects everyone. There are still too many reports of drug activity, graffiti, vandalism and noise. Through partnership working with the Police, Southfields is still a safe ward to live and work in. Work continues to be relentless in thwarting such unwanted, illegal behaviours.

1. It is understood that residents are hesitant to report drug dealing on their street. I assist by completing reports to the police where they request to do so.



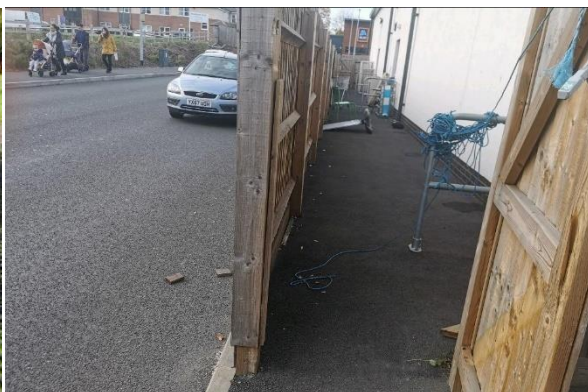
2. Speak and meet with the Beat 62 Police (Southfields) team, working through matters arising and then communicating back to residents.

3. Perform a weekly graffiti audit and arrange removal as appropriate

### MEMBER'S HIGHWAYS FUND

With £50,000 available to spend on highway's projects across the division, the work this year has been triaging which projects make use of the limited financial resource.

So far, speed indicator signs, grass mesh on high traffic areas, money towards the 20 mph and the Aldi crossing campaign have been prioritised.



### PROTECTING WOODTHORPE HAMLET

This beautiful pocket of the division has come under several speculative planning applications, all utilising the A6004 roundabout, with its acutely angled hamlet spur. Having held two meetings with highway's planning officers, we were successful in thwarting two of the developments, due to the insufficiency of the highways proposals alone.

Any developments would have had to involve a largescale widening of Main Street and possibly even entrance off Terry Yardley Way – the former too expensive for the developer and the latter unacceptable to highways, as the carriageway is a 50-mph road.

